



## RECEPTION SEATING

Jigsaw Range	234
Metal Framed Seating	236
Ultra Range	237
Tub Range	238
Iconic Range	240
Iconic Connect	242
Iceberg Range	244
Leather Seating	246

## 5 Jigsaw Shapes



Extensive range of stylish, lightweight stools which can be configured to create endless layouts.

CODE	DESCRIPTION	SIZE IN MM	PRICE
25ST2987	Round 2 Bite Fabric	525W x 515D x 370H	POA
25ST2988	Round - Fabric	430W x 430D x 370H	POA
25ST2989	Long 1 Bite - Fabric	980W x 430D x 370H	POA
25ST2990	Long - Fabric	1040W x 430D x 370H	POA
25ST2991	Round 2 Bite Vinyl	525W x 515D x 370H	POA
25ST2992	Round - Vinyl	430W x 430D x 370H	POA
25ST2993	Long 1 Bite - Vinyl	980W x 430D x 370H	POA
25ST2994	Long - Vinyl	1040W x 430D x 370H	POA

• Available in Advantage, Era, Phoenix & Rivet fabrics as shown on pages 268 - 270

• Available in Just Colour Vinyl as shown on page 272



## 5 Jigsaw Stools



Lightweight range of stools with FSC certified wood core and Black feet, upholstered in a large range of fabric or vinyls.

CODE	DESCRIPTION	SIZE IN MM	PRICE
25ST2995	Stool - Fabric	550W x 500D x 370H	POA
25ST2996	Angled Stool - Fabric	560W x 350W x 500D x 370H	POA
25ST2997	Stool - Vinyl	550W x 500D x 370H	POA
25ST2998	Angled Stool - Vinyl	560W x 350W x 500D x 370H	POA

• Available in Advantage, Era, Phoenix & Rivet fabrics as shown on pages 268 - 270

• Available in Just Colour Vinyl as shown on page 272



## 5 Jigsaw Toadstools



The Toadstools come with a White vinyl base, your choice of fabric or vinyl in a wide range of colours and come with White vinyl spots. Manufactured with a polystyrene core with 18mm FSC® & wooden base

CODE	DESCRIPTION	SIZE IN MM	PRICE
25ST2999	Toadstool - Fabric	450D x 450H	POA
25ST3000	Pack of 3 Toadstools - Fabric	450D x 450H	POA
25ST3001	Toadstool - Vinyl	450D x 450H	POA
25ST3002	Pack of 3 Toadstools - Vinyl	450D x 450H	POA

• Available in Advantage, Era, Phoenix & Rivet fabrics as shown on pages 268 - 270

• Available in Just Colour Vinyl as shown on page 272

• Pack of 3 will all be upholstered in the same option

## 5 Jigsaw Shapes

Extensive range of lightweight stools with polystyrene cores which can be configured to create endless layouts. Ideal for reception and break-out areas as well as libraries and residential areas.

CODE	DESCRIPTION	SIZE IN MM	PRICE
25ST3003	Round 2 Bite - Fabric	530W x 520D x 450H	POA
25ST3004	Round - Fabric	530W x 530D x 450H	POA
25ST3005	Long 1 Bite - Fabric	1050W x 530D x 450H	POA
25ST3006	Long - Fabric	1180W x 530D x 450H	POA
25ST3007	Round 2 Bite - Vinyl	530W x 520D x 450H	POA
25ST3008	Round - Vinyl	530W x 530D x 450H	POA
25ST3009	Long 1 Bite - Vinyl	1050W x 530D x 450H	POA
25ST3010	Long - Vinyl	1180W x 530D x 450H	POA

- Available in Advantage, Era, Phoenix & Rivet fabrics as shown on pages 268 - 270
- Available in Just Colour Vinyl as shown on page 272



## 5 Jigsaw Stools

Lightweight range of stools with FSC certified wood core and Black feet, upholstered in a large range of fabric or vinyls.

CODE	DESCRIPTION	SIZE IN MM	PRICE
25ST3011	Stool - Fabric	560W x 610D x 450H	POA
25ST3012	Angled Stool - Fabric	600W x 350W x 610D x 450H	POA
25ST3013	Stool - Vinyl	560W x 610D x 450H	POA
25ST3014	Angled Stool - Vinyl	600W x 350W x 610D x 450H	POA

- Available in Advantage, Era, Phoenix & Rivet fabrics as shown on pages 268 - 270
- Available in Just Colour Vinyl as shown on page 272



## 5 Jigsaw Cross

Lightweight range of stools with FSC certified wood core and Black feet, upholstered in a range of fabric or vinyls.

CODE	DESCRIPTION	SIZE IN MM	PRICE
25ST3015	Square Stool - Fabric	450W x 450D x 450H	POA
25ST3016	Cross - Fabric	1330W x 1330D x 450H	POA
25ST3017	Square Stool - Vinyl	450W x 450D x 450H	POA
25ST3018	Cross - Vinyl	1330W x 1330D x 450H	POA

- Available in Advantage, Era, Phoenix & Rivet fabrics as shown on pages 268 - 270
- Available in Just Colour Vinyl as shown on page 272





## 2 Rubic Chair



The Rubic chair is a traditional steel framed low easy seat manufactured with deep seat and back pads in a choice of 2 colours and comes with an 8 hour usage rating.

CODE	DESCRIPTION	DIMENSIONS	PRICE
25C3019	Chair	530W x 680D x 810H	£177.75

- Seat height 430mm

Colour options:

Charcoal Blue

Frame:

Black

## 2 Pearl Chair



The Pearl reception chair comes with a deep seat and back for contemporary, comfortable seating. It is available in 3 fabric colour options and a Black powder coated 18mm Steel frame.

CODE	DESCRIPTION	DIMENSIONS	PRICE
25C3020	Chair	650W x 800D x 860H	£232.25

- Seat height 425mm

Colour options:

Charcoal Blue Mustard

Frame:

Black

## 2 Jade Chair



The Jade reception chair comes with a deep seat and back with stylish stitching detail for contemporary, comfortable seating. It is available in 3 fabric colour options and a Black powder coated 18mm Steel frame.

CODE	DESCRIPTION	DIMENSIONS	PRICE
25C3021	Chair	620W x 880D x 830H	£193.50

- Seat height 435mm



Colour options:

Charcoal Blue Mustard Jade

Frame:

Black

## 5 Ultra Reception Chairs

The Ultra is a cost effective range of modular reception seating. All the chairs are fully upholstered and come with glide feet.

CODE	DESCRIPTION	SIZE IN MM	PRICE
25C3022	Chair	610W x 670D x 670H	£109.25
25C3023	Chair with Left or Right Arm	650W x 670D x 670H	£145.75
25C3024	Armchair	770W x 670D x 670H	£176.75

- Available in Citadel fabrics as shown on page 271
- Seat Height 430mm



## 5 Ultra Corner Chairs

The Ultra is a cost effective range of modular reception seating. All the chairs are fully upholstered and come with glide feet.

CODE	DESCRIPTION	SIZE IN MM	PRICE
25C3025	Concave Segment Chair	490W x 670D x 670H	£109.25
25C3026	Convex Segment Chair	490W x 670D x 670H	£109.25
25C3027	Corner Unit	610W x 610D x 670H	£213.95

- Available in Citadel fabrics as shown on page 271
- Seat Height 430mm



## 5 Ultra Reception Sofa

The Ultra is a cost effective range of modular reception seating. All the chairs are fully upholstered and come with glide feet.

CODE	DESCRIPTION	SIZE IN MM	PRICE
25C3028	Two Seater with Arms	1380W x 670D x 670H	£291.50

- Available in Citadel fabrics as shown on page 271
- Seat Height 430mm



## 5 Ultra Coffee Table

The Ultra range comes with a square coffee table with an upholstered surround and a Beech top.

CODE	DESCRIPTION	SIZE IN MM	PRICE
25C3029	Square Coffee Table	620W x 620D x 415H	£90.75

- Available in Citadel fabrics as shown on page 271



## 5 Classline Value Tub Range



The Classline Value open front tub chairs are manufactured with thick CMHR foam and a generously sized fixed seat pad.

CODE	DESCRIPTION	DIMENSIONS	PRICE
25C3030	Open Front Chair	725W x 620D x 780H	£239.50
25C3031	Open Front 2 Seater Sofa	1225W x 620D x 780H	£422.50

- Available in Era, Phoenix & Rivet fabric options as shown on pages 268 - 270
- Seat Height 450mm



## 5 Classline Tub Range



The Classline open front tub chairs are manufactured with a webbed core with thick CMHR foam and a separate seat cushion.

CODE	DESCRIPTION	DIMENSIONS	PRICE
25C3032	Open Front Tub Chair	700W x 560D x 830H	£287.50
25C3033	Open Front 2 Seater Sofa	1200W x 560D x 830H	£492.75
25C3034	Open Front 3 Seater Sofa	1700W x 560D x 830H	£720.25

- Available in Era, Phoenix & Rivet fabric options as shown on pages 268 - 270
- Seat Height 440mm



## 5 Classline Tub Range



The Classline closed front tub chairs are manufactured with a webbed core with thick CMHR foam and a separate seat cushion.

CODE	DESCRIPTION	DIMENSIONS	PRICE
25C3035	Closed Front Tub Chair	700W x 560D x 830H	£304.75
25C3036	Closed Front 2 Seater Sofa	1200W x 560D x 830H	£520.75
25C3037	Closed Front 3 Seater Sofa	1700W x 560D x 830H	£758.50

- Available in Era, Phoenix & Rivet fabric options as shown on pages 268 - 270
- Seat Height Closed Front Tubs: 440mm



## 5 Orion Wooden Leg Tub Range

The Orion open front tub chairs are manufactured with a webbed core with thick CMHR foam and a separate seat cushion. They are supplied with stylish wooden legs.

CODE	DESCRIPTION	DIMENSIONS	PRICE
25C3038	Open Front Tub Chair	700W x 560D x 770H	£384.75
25C3039	Open Front 2 Seater Sofa	1200W x 560D x 770H	£593.75
25C3040	Open Front 3 Seater Sofa	1700W x 560D x 770H	£839.50

- Available in Era, Phoenix & Rivet fabric options as shown on pages 268 - 270
- Seat Height: 470mm



## 5 Orion Metal Leg Tub Range

The Orion open front tub chairs are manufactured with a webbed core with thick CMHR foam and a separate seat cushion. They are supplied with stylish metal legs.

CODE	DESCRIPTION	DIMENSIONS	PRICE
25C3041	Open Front Tub Chair	700W x 560D x 770H	£384.75
25C3042	Open Front 2 Seater Sofa	1200W x 560D x 770H	£593.75
25C3043	Open Front 3 Seater Sofa	1700W x 560D x 70H	£839.50

- Available in Era, Phoenix & Rivet fabric options as shown on pages 268 - 270
- Seat Height: 470mm



## 5 Orion Coffee Tables

The Orion coffee tables come with a standard White or Beech laminate top or the option of toughened glass. The surround can be upholstered to match your seating range.

CODE	DESCRIPTION	DIMENSIONS	PRICE
25T3044	Square Table Laminate Top	570W x 570D x 350H	£163.50
25T3045	Round Table Laminate Top	600D x 350H	£163.50
25T3046	Square Table Glass Top	570W x 570D x 350H	£199.50
25T3047	Round Table Glass Top	600D x 350H	£199.50

- Available in Era, Phoenix & Rivet fabric options as shown on pages 268 - 270



Top colour options:





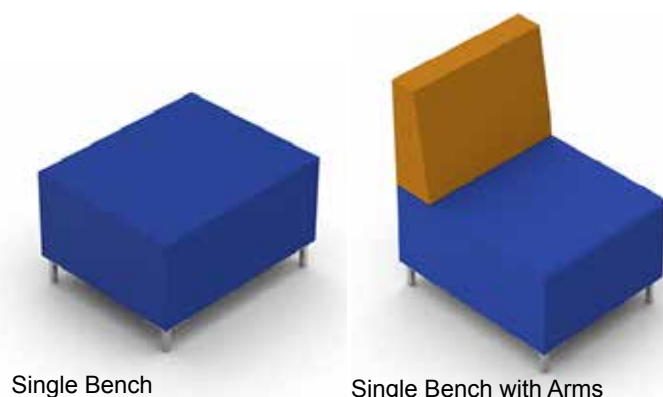


## 5 Iconic Bench Range

The Iconic range allows you to create a large array of layouts due to its modular design. The range offers a single, two seater or three seater seat which can be used as stand alone option, with or without a back and with or without the option of arms. This range is manufactured with a webbed seat and thick CMHR foam for superior comfort. They are supplied with metal legs as standard.

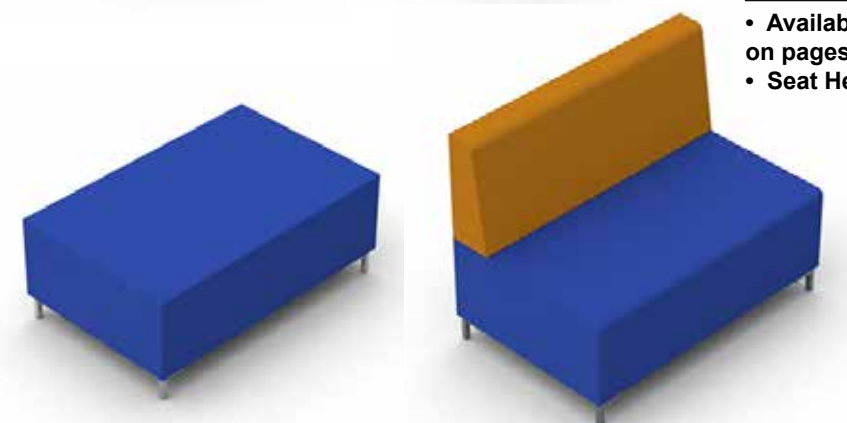
CODE	DESCRIPTION	DIMENSIONS	PRICE
25B3048	Single Bench	580W x 700D x 430H	£293.75
25B3049	Single Bench with Back	580W x 700D x 850H	£398.95
25B3050	Two Seater Bench	1100W x 700D x 430H	£384.00
25B3051	Two Seater Bench with Back	1100W x 700D x 850H	£485.75
25B3052	Three Seater Bench	1800W x 700D x 430H	£486.95
25B3053	Three Seater Bench with Back	1800W x 700D x 850H	£632.75
25ACC3054	Additional Arm	150W x 700D x 700H	£153.75

- Available in Era, Phoenix & Rivet fabric options as shown on pages 268 - 270
- Seat Height 430mm



Single Bench

Single Bench with Arms

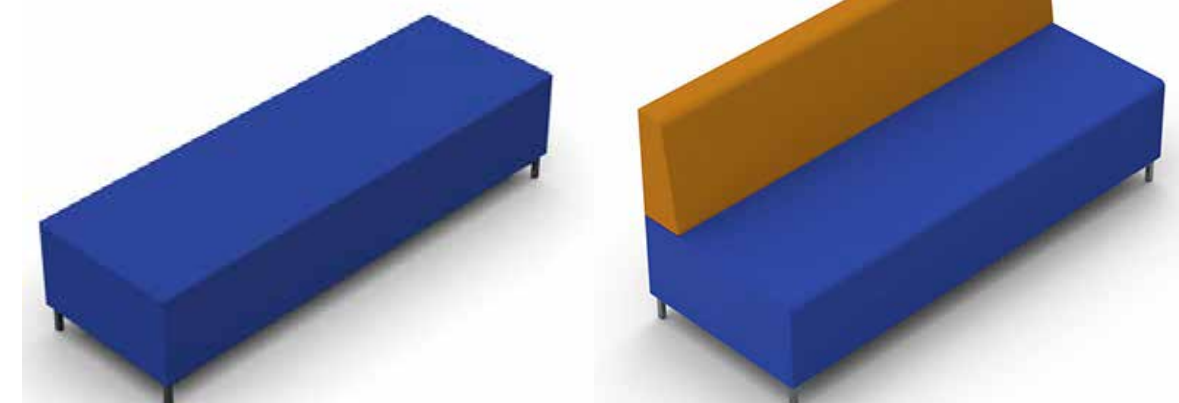


Two Seater Bench

Two Seater Bench with Arms



Additional Arm



Three Seater Bench

Three Seater Bench with Arms





## 5 Iconic Corner & End Range

The range offers a D end and Corner unit which are ideal for finishing off a run of seating or putting together a central seating design. This range is manufactured with a webbed seat and thick CMHR foam for superior comfort. They are supplied with metal legs as standard.

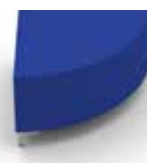
The two coffee tables are the same size as a single or double unit with a choice of a White or Beech laminate top and stylish metal legs as standard.

CODE	DESCRIPTION	DIMENSIONS	PRICE
25B3055	45° Corner Bench	700W x 700D x 430H	£218.50
25B3056	90° Corner Bench	700W x 700D x 430H	£242.95
25B3057	Square Corner Bench	700W x 700D x 430H	£321.25
25B3058	Square Corner Unit with Back	700W x 700D x 850H	£632.75
25B3069	D End Unit with Back	1400W x 700D x 850H	£606.95
25T3060	Single Table	580W x 700D x 430H	£262.50
25T3061	Double Table	1100W x 700D x 430H	£334.50

- Available in Era, Phoenix & Rivet fabric options as shown on pages 268 - 270
- Seat Height 430mm



45° Corner Bench



90° Corner Bench



Square Corner Bench



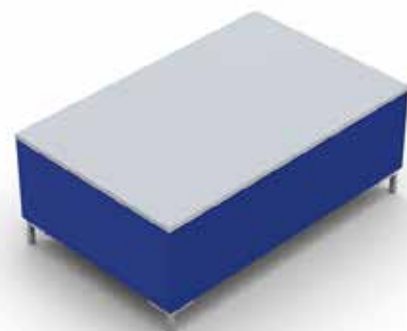
Square Corner Bench with Back



D End Unit with Back

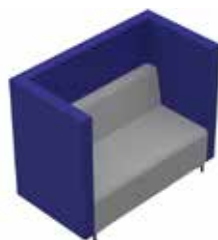


Single Table



Double Table

## 5 Iconic Connect Seats

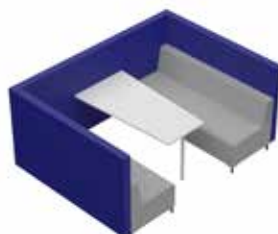
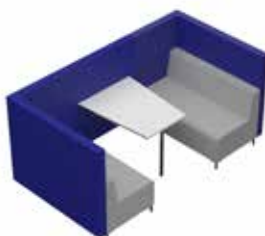


The modern Iconic Connect is a high back seating range that comes in a single, two or three seater option. An optional link panel allows you to create pods and removes the need for fixed partitioning. Manufactured with a webbed seat, thick CMHR foam and surround panels with an acoustic core to help reduce noise.

CODE	DESCRIPTION	DIMENSIONS	PRICE
25C3062	Single Seater	980W x 800D x 1200H	£1134.95
25C3063	Two Seater	1500W x 800D x 1200H	£1487.50
25C3064	Three Seater	2000W x 800D x 1200H	£1782.95
25ACC3065	Link Panel	1000W x 100D x 1200H	£353.25

- Available in Era, Phoenix & Rivet fabric options as shown on pages 268 - 270
- Two tone option available at no additional cost
- Seat height 430mm

## 5 Iconic Connect Open Pods

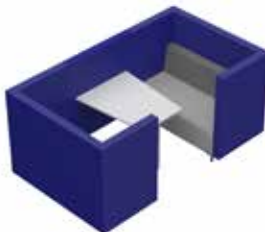
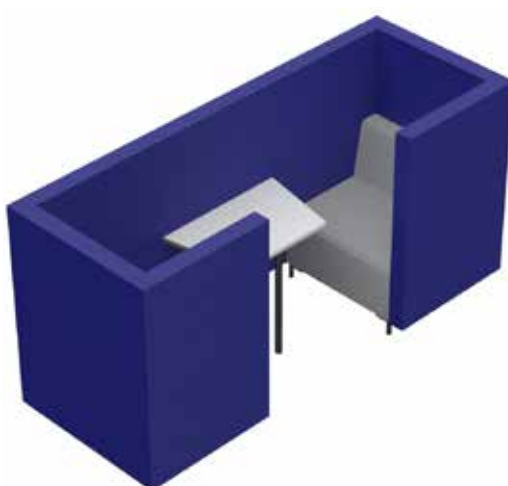


The Iconic Connect Open pods come with an open front to allow easier access to the pod. The 25mm MFC fixed table is tapered, starting at 800mm wide at the link panel, going down to 600mm wide at the front with a Black pole leg. The tables are available in an Oak, Matt White or Black finish.

CODE	DESCRIPTION	DIMENSIONS	PRICE
25C3066	Two Person Open Pod	2600W x 880D x 1200H	£1779.50
25C3067	Four Person Open Pod	2600W x 1400D x 1200H	£2519.50
25C3068	Six Person Open Pod	2600W x 1900D x 1200H	£3300.75

- Available in Era, Phoenix & Rivet fabric options as shown on pages 268 - 270
- Two tone option available at no additional cost
- Seat height 430mm

## 5 Iconic Connect Closed Pods



The Iconic Connect Open pods come with a closed front where more privacy is required. The 25mm MFC fixed table is tapered, starting at 800mm wide at the link panel, going down to 600mm wide at the front with a Black pole leg. The tables are available in an Oak, Matt White or Black finish.

CODE	DESCRIPTION	DIMENSIONS	PRICE
25C3069	Two Person Closed Pod	2600W x 980D x 1200H	£2269.25
25C3070	Four Person Closed Pod	2600W x 1500D x 1200H	£2974.50
25C3071	Six Person Closed Pod	2600W x 2000D x 1200H	£3718.95

- Available in Era, Phoenix & Rivet fabric options as shown on pages 268 - 270
- Two tone option available at no additional cost
- Seat height 430mm

## 5 Iconic Connect High Back Seats

The modern Iconic Connect is a high back seating range that comes in a single, two or three seater option. An optional link panel allows you to create pods and removes the need for fixed partitioning. Manufactured with a webbed seat, thick CMHR foam and surround panels with an acoustic core to help reduce noise.

CODE	DESCRIPTION	DIMENSIONS	PRICE
25C3072	Single Seater	980W x 800D x 1700H	£1306.50
25C3073	Two Seater	1500W x 800D x 1700H	£1716.00
25C3074	Three Seater	2000W x 800D x 1700H	£2068.75
25ACC3075	Link Panel	1000W x 100D x 1700H	£438.95

- Available in Era, Phoenix & Rivet fabric options as shown on pages 268 - 270
- Two tone option available at no additional cost
- Seat height 430mm



## 5 Iconic Connect High Back Open Pods

The Iconic Connect Open pods come with an open front to allow easier access to the pod. The 25mm MFC fixed table is tapered, starting at 800mm wide at the link panel, going down to 600mm wide at the front with a Black pole leg. The tables are available in an Oak, Matt White or Black finish.

CODE	DESCRIPTION	DIMENSIONS	PRICE
25C3076	Two Person Open Pod	2600W x 880D x 1700H	£2122.50
25C3077	Four Person Open Pod	2600W x 1400D x 1700H	£2976.75
25C3078	Six Person Open Pod	2600W x 1900D x 1700H	£3872.00

- Available in Era, Phoenix & Rivet fabric options as shown on pages 268 - 270
- Two tone option available at no additional cost
- Seat height 430mm



## 5 Iconic Connect High Back Closed Pods

The Iconic Connect Open pods come with a closed front where more privacy is required. The 25mm MFC fixed table is tapered, starting at 800mm wide at the link panel, going down to 600mm wide at the front with a Black pole leg. The tables are available in an Oak, Matt White or Black finish.

CODE	DESCRIPTION	DIMENSIONS	PRICE
25C3079	Two Person Closed Pod	2600W x 980D x 1700H	£2612.00
25C3080	Four Person Closed Pod	2600W x 1500D x 1700H	£3431.50
25C3081	Six Person Closed Pod	2600W x 2000D x 1700H	£4290.50

- Available in Era, Phoenix & Rivet fabric options as shown on pages 268 - 270
- Two tone option available at no additional cost
- Seat height 430mm





## 2 Iceberg Leather Look Tub Seating



Comfortable armchair and two seater tub sofa upholstered in a durable Black PU fabric. Plush cushioned back with a stylish stitching detail, comes with an open front.

CODE	DESCRIPTION	DIMENSIONS	PRICE
25C3082	Arm Chair	735W x 615D x 770H	£246.50
25C3083	Two Seater	1240W x 615D x 770H	£370.00

- Seat Height 415mm



## 2 Iceberg Leather Faced Seating



The Iceberg leather faced seating range comes with an armchair and 2 seater settee in Black. Manufactured with a deep cushioned seat and back pad for comfort and comes with stylish tubular legs.

CODE	DESCRIPTION	DIMENSIONS	PRICE
25C3084	Arm Chair	830W x 770D x 810H	£461.50
25C3085	Two Seater	1350W x 770D x 810H	£612.75

- Seat Height 450mm
- Available in Black only



## 2 Iceberg Lux Tub Chairs

Colourful and comfortable armchair and two seater tub sofa with a deep cushioned seat and back, upholstered in 6 exciting durable PU fabric colours. Plush cushioned back with a stylish stitching detail, comes with a closed front and metal tubular legs.

CODE	DESCRIPTION	DIMENSIONS	PRICE
25C3086	Arm Chair	760W x 700D x 730H	£294.95
25C3087	Two Seater	1230W x 620D x 740H	£578.95

- Arm Chair Seat Height 430mm
- Two Seater Seat Height 420mm



Colour options:



## 2 Iceberg Coffee Tables

A square or rectangular coffee table is available for the Iceberg range which comes with a Beech top and tubular legs.

CODE	DESCRIPTION	DIMENSIONS	PRICE
25T3088	Square Coffee Table	635W x 635D x 460H	£113.75
25T3089	Rectangular Coffee Table	1220W x 635D x 460H	£139.25



## 2 Retro Reception Range



A contemporary range of bonded leather reception furniture, offering a chair, and two or three seater sofa. Comes with an oversized deep cushioned seat with a medium height supportive backrest. The stylish Chrome frame and integrated leg supports wrap around the chair to create an illusion of being suspended.

CODE	DESCRIPTION	DIMENSIONS	PRICE
25C3090	Chair	890W x 770D x 700H	£430.50
25C3091	Two Seater Sofa	1450W x 770D x 700H	£553.25
25C3092	Three Seater Sofa	2010W x 770D x 700H	£737.25

- Seat Height 410mm
- Available in Black only

## 2 Infinity Reception Range



The Infinity range of seating is available in various combinations to fit any size or design. The soft leather facings and stitched detail give a contemporary feel with the Chrome surround frames.

CODE	DESCRIPTION	DIMENSIONS	PRICE
25C3093	Infinity Stool	660W x 520D x 440H	£177.00
25C3094	Infinity Chair with Back	660W x 660D x 770H	£285.00
25C3095	Infinity Corner Chair with Back	660W x 660D x 770H	£302.95

- Seat Height 440mm
- Available in Black only



## 2 Galway Reception Range



The Galway faux leather seating comes with a sturdy wooden frame and webbed base. The extra thick seat and back cushioning makes this range a modern yet comfortable option. The legs are manufactured from 40mm square section steel in a Chrome finish.

CODE	DESCRIPTION	DIMENSIONS	PRICE
25C3096	Reception Chair	700W x 680D x 710H	£577.25
25C3097	Two Seater Reception Sofa	1230W x 680D x 710H	£694.75
25C3098	Three Seater Reception Sofa	1230W x 680D x 710H	£826.25

- Seat Height 440mm
- Three Seater Sofa has a 6 week lead time
- Available in Black only



There is a £45  
delivery charge  
on these products





## RECEPTION FURNITURE

Georgian Reception	248
Pigeonhole Units	251
Lecterns	252
Crystal Wall Boards	253
Laptop Tables	254
Coat Stands	254
Trophy Showcases	255
Footrests	256
Kicksteps	256

## 10 Georgian Base Unit



The Georgian reception range is versatile and stylish offering a wide selection of stand-alone units to suit your needs. All base units are fitted with one central cable port unless ordered with glass or wooden shelves.

CODE	SIZE IN MM	PRICE
25RU3101	600W x 800D x 740H	£245.50
25RU3102	800W x 800D x 740H	£253.75
25RU3103	1000W x 800D x 740H	£258.75
25RU3104	1200W x 800D x 740H	£269.50
25RU3105	1400W x 800D x 740H	£286.50
25RU3106	1600W x 800D x 740H	£298.50
25RU3107	1800W x 800D x 740H	£309.25
25RU3108	2000W x 800D x 740H	£323.75

- Plan and design service available

Top colours:



## 10 Georgian Base DDA Unit



The DDA base unit comes with a 25mm top, PVC edge and the modesty panel is inset by 330mm.

CODE	SIZE IN MM	PRICE
25RU3109	600W x 800D x 740H	£315.50
25RU3110	800W x 800D x 740H	£321.75
25RU3111	1000W x 800D x 740H	£329.95
25RU3112	1200W x 800D x 740H	£338.25
25RU3113	1400W x 800D x 740H	£355.75
25RU3114	1600W x 800D x 740H	£367.25
25RU3115	1800W x 800D x 740H	£375.95
25RU3116	2000W x 800D x 740H	£389.25

- Plan and design service available

Top colours:



## 10 Georgian Top Box



The top box comes with a 25mm top, PVC edge is available for all the standard base units. It comes in a range of wood finishes.

CODE	SIZE IN MM	PRICE
25RU3117	600W x 350D x 420H	£144.50
25RU3118	800W x 350D x 420H	£148.95
25RU3119	1000W x 350D x 420H	£156.50
25RU3120	1200W x 350D x 420H	£160.95
25RU3121	1400W x 350D x 420H	£174.25
25RU3122	1600W x 350D x 420H	£189.95
25RU3123	1800W x 350D x 420H	£200.75
25RU3124	2000W x 350D x 420H	£212.75

- Plan and design service available

Top colours:



## 10 Georgian 45° Corner Units

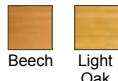
The 45° units offer flexibility when designing your reception layout. The base unit comes with one cable port hole as standard.

CODE	DESCRIPTION	SIZE IN MM	PRICE
25RU3125	Corner Base Unit	1837W x 922D x 800D x 740H	£536.95
25RU3126	Corner Top Box	1837W x 350D x 350D x 420H	£285.25

- Plan and design service available



### Wood colours:



### Powder coated metal options:



## 10 Georgian 90° Small Corner Units

The 90° units offer flexibility when designing your reception layout. The base unit comes with one cable port hole as standard.

CODE	DESCRIPTION	SIZE IN MM	PRICE
25RU3127	Small Corner Base Unit	800W x 800D x 800D x 740H	£496.50
25RU3128	Small Corner Top Box	800W x 350D x 350D x 420H	£285.75

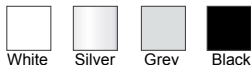
- Plan and design service available



### Wood colours:



### Powder coated metal options:



## 10 Georgian 90° Large Corner Units

The 90° units offer flexibility when designing your reception layout. The base unit comes with one cable port hole as standard.

CODE	DESCRIPTION	SIZE IN MM	PRICE
25RU3129	Large Corner Base Unit	1080W x 1080D x 800D x 740H	£531.75
25RU3130	Large Corner Top Box	1080W x 350D x 350D x 420H	£304.75

- Plan and design service available



### Wood colours:



### Powder coated metal options:





## 10 Georgian Shelves



Shelves are available for the standard and DDA base units. Wooden shelves are available in 10 wood finishes and the Glass shelves are made from green tinted, strengthened glass.

CODE	DESCRIPTION	SIZE IN MM	PRICE
25RU3131	Wooden Shelf	1200W x 300D	£262.50
25RU3132	Wooden Shelf	1400W x 300D	£276.95
25RU3133	Wooden Shelf	1600W x 300D	£287.75
25RU3134	Strengthened Glass Shelf	800W x 300D	£477.50
25RU3135	Strengthened Glass Shelf	1000W x 300D	£518.50
25RU3136	Strengthened Glass Shelf	1200W x 300D	£536.95
25RU3137	Strengthened Glass Shelf	1400W x 300D	£556.50
25RU3138	Strengthened Glass Shelf	1600W x 300D	£647.95

• Plan and design service available

Top colours:



## 10 Georgian Kickplates



Stainless steel kickplates are available for all units.

CODE	DESCRIPTION	SIZE IN MM	PRICE
25RU3139	Kickplate	600W x 100H	£75.25
25RU3140	Kickplate	800W x 100H	£79.50
25RU3141	Kickplate	1000W x 100H	£85.25
25RU3142	Kickplate	1200W x 100H	£88.95
25RU3143	Kickplate	1400W x 100H	£92.25
25RU3144	Kickplate	1600W x 100H	£97.95
25RU3145	Kickplate	1800W x 100H	£103.50
25RU3146	Kickplate	2000W x 100H	£111.25
25RU3147	Kickplate	45°	£112.95
25RU3148	Kickplate	90° Small	£108.50
25RU3149	Kickplate	90° Large	£112.95

• Plan and design service available

PLAN & DESIGN SERVICE AVAILABLE, PLEASE CALL FOR FURTHER INFORMATION

## 10 Georgian Pedestals



The Georgian range of pedestals come with a 25mm top. The wood finishes are resistant to heat, staining and scratching. Comes in a range of colours and are supplied with Silver handles as standard.

CODE	DESCRIPTION	SIZE IN MM	PRICE
25P3150	2 Drawer Low Mobile	438W x 605D x 595H	£131.95
25P3151	3 Drawer Low Mobile	438W x 605D x 595H	£131.95
25P3152	2 Drawer Mobile Under Desk	438W x 550D x 635H	£156.50
25P3153	3 Drawer Mobile Under Desk	438W x 550D x 635H	£156.50
25P3154	4 Drawer Mobile Under Desk	438W x 550D x 635H	£156.50
25P3155	2 Drawer Desk High 800	438W x 800D x 740H	£179.95
25P3156	3 Drawer Desk High 800	438W x 800D x 740H	£179.95
25P3157	4 Drawer Desk High 800	438W x 800D x 740H	£179.95

• Suspension files hook front to back in the filing drawers

• Plan and design service available

Top colours:



## 5 Wall Mounted Pigeonhole Units

The pigeonhole units are manufactured from 18mm MDF with an 8mm backboard. The adjustable, clear acrylic shelves are 3mm thick and come complete with name strips. Units also come with metal adjustable hanging brackets, but fixings are not provided.

CODE	COLUMNS	DESCRIPTION	SIZE IN MM	PRICE
25PH3158	2	6 Hole	738W x 285D x 360H	£231.50
25PH3159	2	8 Hole	738W x 285D x 460H	£257.25
25PH3160	2	10 Hole	738W x 285D x 560H	£290.75
25PH3161	3	9 Hole	1096W x 285D x 360H	£295.95
25PH3162	3	12 Hole	1096W x 285D x 460H	£329.50
25PH3163	3	15 Hole	1096W x 285D x 560H	£386.50



Colour options:



## 5 Floor Standing Pigeonhole Units

The pigeonhole units are manufactured from 18mm MDF with an 8mm backboard. The adjustable, clear acrylic shelves are 3mm thick and come complete with name strips.

CODE	COLUMNS	DESCRIPTION	SIZE IN MM	PRICE
25PH3164	2	24 Hole	558W x 375D x 1320H	£502.75
25PH3165	3	36 Hole	826W x 375D x 1320H	£644.95
25PH3166	4	48 Hole	1094W x 375D x 1320H	£799.95
25PH3167	5	60 Hole	1362W x 375D x 1320H	£942.00



Colour options:



## 5 Floor Standing Pigeonhole Cupboards

The pigeonhole units are manufactured from 18mm MDF with an 8mm backboard. The adjustable, clear acrylic shelves are 3mm thick and come complete with name strips. The cupboard comes with one adjustable shelf.

CODE	COLUMNS	DESCRIPTION	SIZE IN MM	PRICE
25PH3168	3	18 Hole	826W x 375D x 1320H	£644.95
25PH3169	4	24 Hole	1094W x 375D x 1320H	£799.95
25PH3170	3	36 Hole	826W x 375D x 1930H	£954.95
25PH3171	4	48 Hole	1094W x 375D x 1930H	£1187.50
25PH3172	5	60 Hole	1362W x 375D x 1930H	£1355.50

• Lockable options available, price on request



Colour options:



## 1 Tabletop Folding Lectern



A traditional looking desktop lectern with a large sloping shelf and paper ledge. The shelf and two hinged side panels fold flat to aid portability and storage. Finished in Maple effect MFC with tough ABS edging.

CODE	DESCRIPTION	SIZE IN MM	PRICE
25LCT3173	Tabletop Lectern	620W x 465D x 550H	£238.00

- **Folded Dimensions: 620W x 210D x 550H**
- **Supplied fully assembled**



Colour option:



Maple

## 1 Panel Front Lectern



A mobile lectern solution, available in a choice of four colour finishes as shown below, complemented by a Dark Grey steel frame. It features an angled upper shelf with steel bookrest, and a lower accessory shelf. The lectern has 4 castors, 2 of which are locking.

CODE	DESCRIPTION	SIZE IN MM	PRICE
25LCT3174	Panel Front Lectern	600W x 450D x 1200H	£231.75

- **Supplied flat-packed for simple self assembly**
- **This lectern cannot be leaned on**

Colour options:



White Grey Black Beech

## 1 Folding Lectern



An attractive lectern that folds inwards for storage. The angled platform is adjustable to 20° and 40° to suit a laptop/tablet or paper notes and cable management is provided through to ground level.

CODE	DESCRIPTION	SIZE IN MM	PRICE
25LCT3175	Folding Lectern	620W x 465D x 1280H	£412.75

- **Folded Dimensions: 620W x 210D x 1280H**
- **Supplied fully assembled**

Colour options:



Black Maple Beech



## 1 Pedestal Lectern

A traditionally designed Pedestal Lectern, available in either a smart Black Ash, or Maple finish. This lectern features a small storage shelf, and a sloping shelf with ledge, to aid presentation.

CODE	DESCRIPTION	SIZE IN MM	PRICE
25LCT3176	Pedestal Lectern	600W x 400D x 1236H	£242.95

- Supplied fully assembled

Colour options:



## 1 Curve Lectern

An attractive, contemporary design lectern, to add flair to your presentation. Supplied with a small storage shelf, and larger sloping shelf with ledge, to aid presentations.

CODE	DESCRIPTION	SIZE IN MM	PRICE
25LCT3177	Curve Lectern	600W x 406D x 1256H	£261.95

- Supplied fully assembled

Colour options:



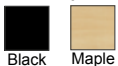
## 1 Secure Lectern

The Secure Lectern is designed with an integral locking compartment, complete with 2 keys. Inside is finished with a height adjustable and removeable shelf.

CODE	DESCRIPTION	SIZE IN MM	PRICE
25LCT3178	Secure Lectern	620W x 543D x 1235H	£340.50

- Supplied fully assembled

Colour options:



## 1 Crystal Wall Boards



The Crystal Wall display boards are a professional and modern way to present staff, class or team information to visitors. The picture pockets are easy to use and information can be changed as required. The board is made from 6mm, virtually shatterproof PETG.

CODE	DESCRIPTION	SIZE IN MM	PRICE
25BD3179	9 Pockets	320W x 30D x 386H	£152.25
25BD3180	20 Pockets	415W x 30D x 620H	£193.50
25BD3181	20 Large Pockets	539W x 30D x 870H	£233.25
25BD3182	35 Pockets	720W x 30D x 620H	£253.25
25BD3183	Nameplate	350W x 30D x 80H	£30.95

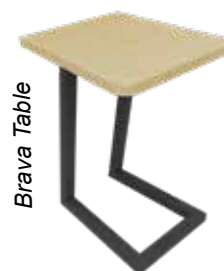
- Standard pockets measure 60W x 82H
- Large pockets measure 90W x 132H
- Chrome stand off fixings supplied.

## 10 Laptop Tables



Ideal for flexible working, whether joining a group on a sofa or pulling a chair up to a join someone at a desk, these laptop tables are ideal for a variety of environments. Made with 25mm MFC tops in a choice of top and frame colours.

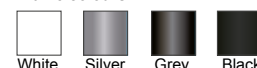
CODE	DESCRIPTION	SIZE IN MM	PRICE
25T3184	Brava Table	404W x 246D x 640H	£219.75
25T3185	Wedge Table	404W x 246D x 640H	£312.95



Top colours:



Frame colours:



## 1 Hat & Coat Stands



The Cluster comes with a steel stand with polypropylene coat pegs, umbrella rings and bag hooks.

The Classic comes with a Silver stand, wooden knobs, 5 coat pegs, bag hooks and an integral umbrella holder.

The Revolving has a Chrome finish, a revolving head with 5 coat pegs, 5 hooks and an integral umbrella holder.

CODE	DESCRIPTION	SIZE IN MM	PRICE
25ACC3186	Cluster	410D x 1645H	£93.95
25ACC3187	Classic	380D x 1760H	£135.25
25ACC3188	Revolving	380D x 1849H	£181.25

**A DELIVERY SURCHARGE MAY APPLY**

## 1 Maplo Free Standing Showcases

The Maplo display showcases are available either fully glazed or with a lockable cupboard at the base. They are heavy duty with aluminium framing and toughened safety glass. Available with the option of 3 LED downlights. All units are made to order and delivered fully assembled.

CODE	DESCRIPTION	SIZE IN MM	PRICE
25DS3189	Fully Glazed	500W x 500D x 1932H	£1450.00
25DS3190	Fully Glazed with 3 downlights	500W x 500D x 1932H	£1690.00
25DS3191	Fully Glazed	1000W x 450D x 1932H	£1970.00
25DS3192	Fully Glazed with 3 downlights	1000W x 450D x 1932H	£2130.00
25DS3193	With Cupboard	500W x 500D x 1932H	£1550.00
25DS3194	With Cupboard and 3 downlights	500W x 500D x 1932H	£1790.00
25DS3195	With Cupboard	1000W x 450D x 1932H	£2030.00
25DS3196	With Cupboard and 3 downlights	1000W x 450D x 1932H	£2100.00

- 500W units are supplied with 4 castors, 2 locking
- 1000W units are supplied with 5 castors, 3 locking



## 10 Premium Wall Mounted Showcases

The Premium wall mounted trophy showcases have a curved design which features a gloss white centre panel with anodised aluminium sides. The trophy showcase with lights comes with 6 LED spotlights, 3 on either side of the unit. Both options are lockable.

CODE	DESCRIPTION	SIZE IN MM	PRICE
25DS3197	Trophy Showcase	1200W x 250D x 1000H	£1034.75
25DS3198	Trophy Showcase with Lights	1200W x 250D x 1000H	£1253.50



## 10 Premium Free Standing Showcases

The Premium floor standing trophy showcases have a curved design which features a gloss white centre panel with anodised aluminium sides. The trophy showcase with lights comes with LED spotlights. The floor standing unit can be personalised to feature the name and/ or logo of your school. All options are lockable.

CODE	DESCRIPTION	SIZE IN MM	PRICE
25DS3199	Floor Standing	1200W x 250D x 2000H	£1441.50
25DS3200	Floor Standing with Lights	1200W x 250D x 2000H	£1653.50
25DS3201	Floor Standing with Graphics	1200W x 250D x 2000H	£1665.50
25DS3202	Floor Standing with Lights & Graphics	1200W x 250D x 2000H	£1878.75





## 1 Footrests



The Arsena footrest is made from Black ABS, comes with 2 height adjustable settings and six tilt angle options.

The Marysa is also made from Black ABS with a non-slip rubber mat. It comes with 4 height adjustable settings and 4 tilt angle options.

CODE	DESCRIPTION	DIMENSIONS	PRICE 2+
25ACC3203	Arsena Footrest	450W x 353D	£95.75
25ACC3204	Marysa Footrest	370W x 250D	£102.55

## 1 Plastic Kick Step GS Approved

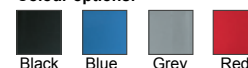


Constructed from tough and durable plastic, this kick step is lightweight and incorporates a non-slip platform. Mounted on 3 retractable polypropylene castors it will not slide, roll or tip over. Approved to the recognised European GS standard.

CODE	DIMENSIONS	PRICE	PRICE 3+
25ACC3205	440D x 450H	£43.95	£40.25

- Load capacity 150kg
- Loaded Height 445mm
- Top diameter 300mm

Colour options:



## 1 Steel Kick Step GS Approved



This steel kick step is lightweight and incorporates a non-slip platform. Mounted on 3 retractable polypropylene castors it will not slide, roll or tip over. Approved to the recognised European GS standard.

CODE	DIMENSIONS	PRICE	PRICE 3+
25ACC3206	435D x 435H	£46.70	£42.95

- Load capacity 150kg
- Loaded Height 430mm
- Top diameter 290mm

Colour options:

